

Performance Indicators

Operational Performance

System Delivery

| | Units | October | November | December | YTD | |
|--|-----------|---------|-----------|-----------|-----------|------------|
| No of Trains Delivered to the Terminal | Actual | trains | 569 | 564 | 599 | 3537 |
| | Scheduled | trains | 627 | 614 | 672 | 3912 |
| No of Tonnes to be Delivered to the Terminal | Actual | tonnes | 5,765,122 | 5,675,988 | 5,993,226 | 35,214,206 |
| | Scheduled | tonnes | 6,332,700 | 6,201,400 | 6,787,200 | 39,511,200 |

Inloading Performance

| | | | | | |
|------------------------------|---------|------|------|------|------|
| Average Terminal Unload Time | hrs:min | 2:11 | 2:06 | 2:09 | 2:09 |
| Average Train Unload Time | hrs:min | 1:46 | 1:43 | 1:45 | 1:45 |

Yard Performance

| | | | | | |
|---------------------------------|------|-----|-----|-----|-----|
| Average Build Time / Parcel | days | 2.6 | 2.5 | 4.1 | 3.2 |
| Average Residence Time / Parcel | days | 1.7 | 3.0 | 2.7 | 2.4 |

Outloading 1 Performance - L5

| | | | | | |
|-------------------------|-----|-------|-------|-------|-------|
| Utilisation | % | 64.1% | 76.9% | 66.6% | 68.3% |
| Average Outloading Rate | tph | 4307 | 4470 | 4520 | 4384 |

Outloading 2 Performance - L6

| | | | | | |
|-------------------------|-----|-------|-------|-------|-------|
| Utilisation | % | 52.8% | 46.3% | 68.0% | 62.7% |
| Average Outloading Rate | tph | 4971 | 4807 | 4422 | 4643 |

Outloading 3 Performance - L15

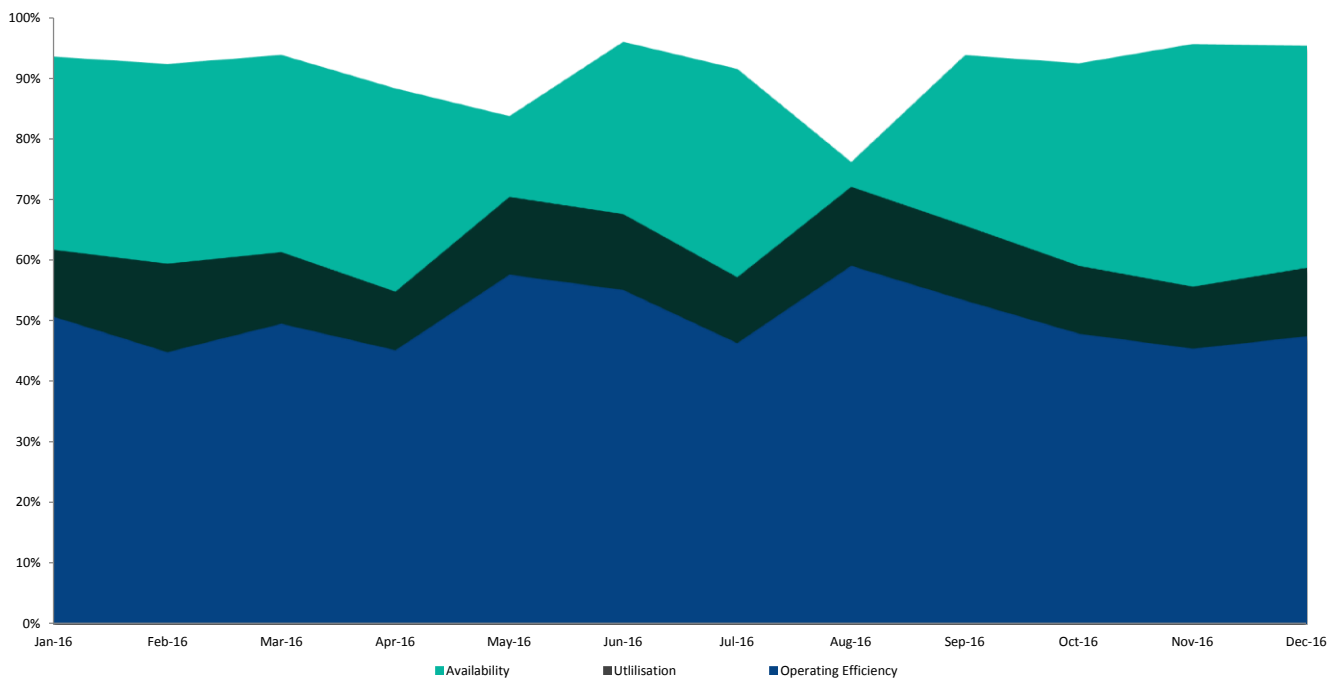
| | | | | | |
|-------------------------|-----|-------|-------|-------|-------|
| Utilisation | % | 85.2% | 82.8% | 87.2% | 80.9% |
| Average Outloading Rate | tph | 5091 | 4692 | 4773 | 4926 |

***Utilisation is a measurement of an entire system string. e.g. Outloading 1 to Shiploader 1.*

Average Outloading Gross Rates

| | | | | | |
|---------|-----|------|------|------|------|
| Handy | tph | 3688 | 3331 | 4178 | 3431 |
| Panamax | tph | 3941 | 4434 | 3717 | 4193 |
| Japmax | tph | 4978 | 4826 | 4740 | 4777 |
| Cape | tph | 4824 | 4610 | 4705 | 4816 |

Operating Efficiency Inloading



Performance Indicators

Operational Performance

Environmental Licence Performance

| | Per Qtr | September | October | November | YTD |
|---|---------|-----------|---------|----------|-----|
| Dust Deposition Exceedance | Nil | Nil | Nil | Nil | Nil |
| Total Suspended Particulates Exceedance | Nil | Nil | Nil | Nil | Nil |
| Noise Levels Exceedance | Nil | Nil | Nil | Nil | Nil |

NB: Receipt of validated noise and dust deposition data is generally one month behind.

Vessel Performance

Number of Vessels

Vessel Mix

| | Units | October | November | December | YTD |
|---------|-------|---------|----------|----------|-----|
| Handy | Ships | 5 | 3 | 5 | 25 |
| Panamax | Ships | 4 | 11 | 8 | 45 |
| Japmax | Ships | 32 | 21 | 25 | 146 |
| Cape | Ships | 20 | 21 | 26 | 143 |

Number of Parcels Per Vessel

| | | | | | |
|---------|----------------|-----|-----|-----|-----|
| Handy | parcels/vessel | 1.0 | 1.0 | 1.0 | 1.0 |
| Panamax | parcels/vessel | 1.3 | 1.1 | 1.3 | 1.2 |
| Japmax | parcels/vessel | 1.2 | 1.2 | 1.0 | 1.1 |
| Cape | parcels/vessel | 2.2 | 2.2 | 2.2 | 2.2 |

Vessel Mix

| | | | | | |
|---------|---|-------|-------|-------|-------|
| Handy | % | 4.6% | 2.7% | 3.9% | 3.3% |
| Panamax | % | 4.9% | 13.8% | 7.6% | 8.4% |
| Japmax | % | 45.7% | 31.3% | 30.7% | 32.1% |
| Cape | % | 44.8% | 52.2% | 57.7% | 56.2% |

Total Tonnes

| | | | | |
|---|-----------|-----------|-----------|------------|
| t | 5,442,369 | 5,133,821 | 6,659,308 | 35,362,441 |
|---|-----------|-----------|-----------|------------|

Vessel Queuing

| | | | | | |
|--|---------|-----|-----|------|------|
| Average Daily Total Vessels in Queue | Vessels | 9.4 | 9.0 | 17.7 | 12.7 |
| Average Daily Vessels with Unavailable Cargo | Vessels | 3.3 | 4.8 | 8.0 | 5.0 |
| Average Days at Anchor | days | 5.4 | 4.3 | 8.1 | 6.6 |
| Average Days at Anchor after Coal is Available | days | 2.9 | 2.6 | 4.1 | 3.8 |

** Unavailable Cargo: Any vessel in the queue that does not have all parcels/products available at the mine/s.

** Weightometer tonnes are used in this report and cut-offs are last wagon and last coal for inloading and outloading respectively

Operating Efficiency Outloading

