

# Performance Indicators

## Operational Performance

### System Delivery

	Units	April	May	June	FYTD
No of Trains Delivered to the Terminal					
Actual	trains	556	677	659	7020
Scheduled	trains	659	752	693	7955
No of Tonnes to be Delivered to the Terminal					
Actual	tonnes	5,381,209	6,411,809	6,412,776	67,960,294
Scheduled	tonnes	6,458,200	7,369,600	6,791,400	77,959,000

### Inloading Performance

Average Terminal Unload Time	hrs:min	2:16	2:12	2:17	2:13
Average Train Unload Time	hrs:min	2:00	1:50	1:57	1:52

### Yard Performance

Average Stock Build Time / Parcel	days	3.3	2.4	2.6	2.7
Average Stock Residence Time / Parcel	days	1.8	1.9	1.3	1.6

### Outloading 1 Performance - L5

Utilisation	%	59.4%	77.8%	72.1%	64.4%
Average Outloading Rate	tph	4807	4831	4408	4501

### Outloading 2 Performance - L6

Utilisation	%	74.8%	87.0%	64.4%	61.5%
Average Outloading Rate	tph	4286	4575	4061	4383

### Outloading 3 Performance - L15

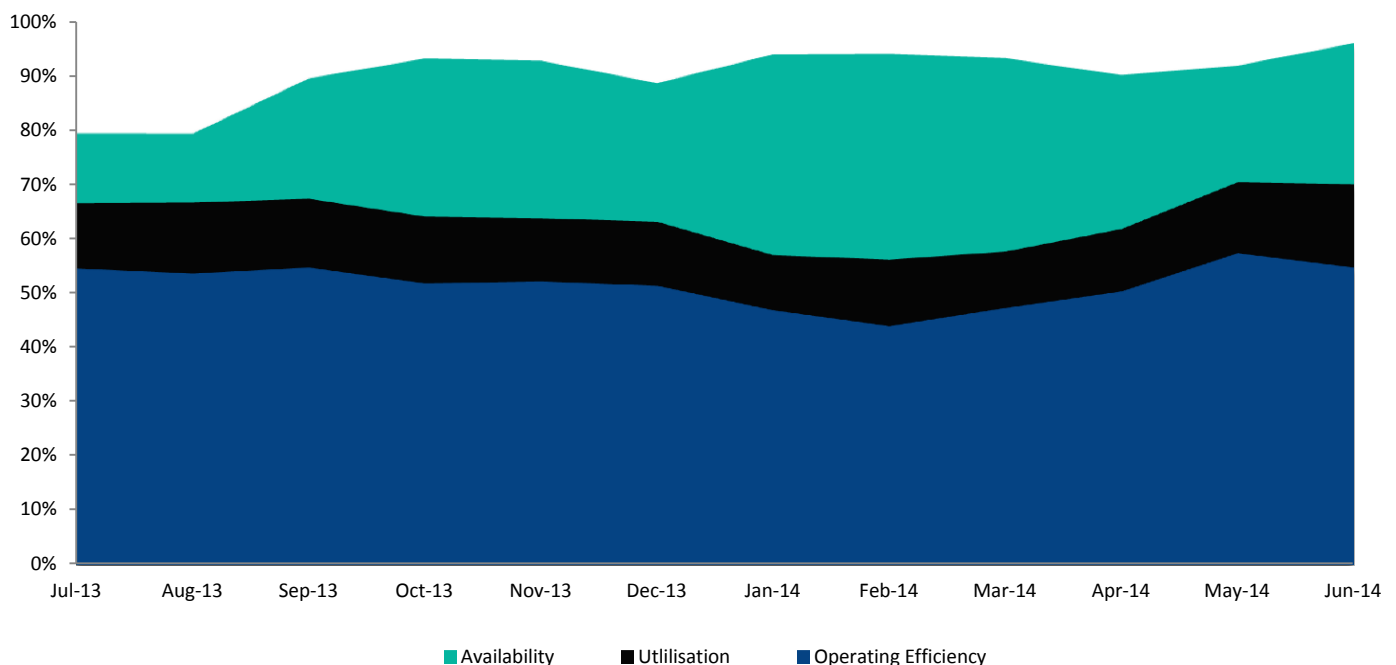
Utilisation	%	80.4%	67.0%	81.1%	80.1%
Average Outloading Rate	tph	4922	3464	4794	4719

\*\* Utilisation is a measurement of an entire system string. e.g. Outloading 1 to Shiploader 1.

### Average Outloading Rates

Handy	tph	3102	3666	3009	3103
Panamax	tph	4269	3790	3799	4195
Japmax	tph	4718	4537	4391	4667
Cape	tph	4791	4665	4637	4672

### Operating Efficiency Inloading



# Performance Indicators

## Operational Performance

### Environmental Licence Performance

	Per Qtr	March	April	May	FYTD
Dust Deposition Exceedance	Nil	Nil	Nil	Nil	1
Total Suspended Particulates Exceedance	Nil	Nil	Nil	Nil	Nil
Noise Levels Exceedance	Nil	Nil	Nil	Nil	Nil

NB: Receipt of validated noise and dust deposition data is generally one month behind.

### Vessel Performance

#### Number of Vessels

#### Vessel Mix

	Units	April	May	June	FYTD
Handy	Ships	4	1	2	44
Panamax	Ships	5	12	11	103
Japmax	Ships	19	23	18	217
Cape	Ships	24	24	31	281

#### Number of Parcels Per Vessel

Handy	parcels/vessel	1.0	1.0	1.0	1.1
Panamax	parcels/vessel	1.2	1.0	1.3	1.2
Japmax	parcels/vessel	1.4	1.3	1.1	1.2
Cape	parcels/vessel	2.3	2.1	2.1	2.3

#### Vessel Mix

Handy	%	3.4%	0.9%	1.3%	2.8%
Panamax	%	6.0%	12.3%	11.3%	10.1%
Japmax	%	27.6%	29.4%	21.4%	25.4%
Cape	%	62.9%	57.4%	66.0%	61.6%

#### Total Tonnes

t	5,666,343	6,187,894	6,720,997	67,850,598
---	-----------	-----------	-----------	------------

### Vessel Queuing

Average Daily Total Vessels in Queue	Vessels	27.6	32.3	20.8	23.2
Average Daily Vessels with Unavailable Cargo	Vessels	5.4	9.6	12.5	7.2
Average Days at Anchor	days	16.8	15.2	11.3	13.2

\*\* Unavailable Cargo: Any vessel in the queue that does not have all parcels/products available at the mine/s.

### Operating Efficiency Outloading

