

Performance Indicators

Operational Performance

System Delivery

	Units	January	February	March	FYTD	
No of Trains Delivered to the Terminal	Actual	trains	507	537	481	4733
	Scheduled	trains	592	603	648	5342

No of Tonnes to be Delivered to the Terminal

Actual	tonnes	4,924,336	5,192,108	4,647,533	46,139,606
Scheduled	tonnes	5,801,600	5,909,400	6,350,400	52,351,600

Inloading Performance

Average Terminal Unload Time	hrs:min	2:16	2:15	2:17	2:16
Average Train Unload Time	hrs:min	1:52	1:52	2:01	1:53

Yard Performance

Average Stock Build Time / Parcel	days	2.5	3.2	3.9	2.9
Average Stock Residence Time / Parcel	days	1.8	2.0	2.2	3.0

Outloading 1 Performance - L5

Utilisation	%	51.6%	66.4%	70.0%	66.9%
Average Outloading Rate	tph	4299	3717	4961	4256

Outloading 2 Performance - L6

Utilisation	%	70.5%	67.7%	72.9%	64.4%
Average Outloading Rate	tph	4568	4033	4100	4359

Outloading 3 Performance - L15

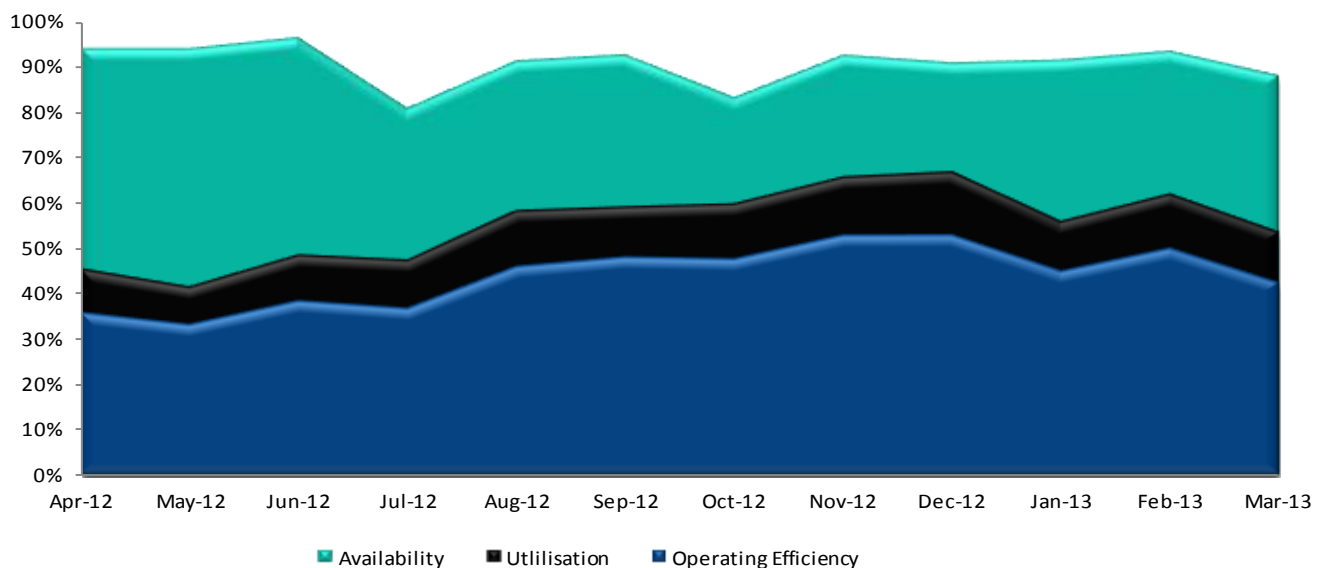
Utilisation	%	73.6%	88.7%	77.2%	81.7%
Average Outloading Rate	tph	4284	4367	4631	4618

*** Utilisation is a measurement of an entire system string. e.g. Outloading 1 to Shiploader 1.*

Average Outloading Rates

Handy	tph	4414	3806	3634	3666
Panamax	tph	4320	3560	4039	4049
Japmax	tph	4010	4205	4854	4444
Cape	tph	4625	4127	4358	4510

Operating Efficiency Inloading



Performance Indicators

Operational Performance

Environmental Licence Performance

	Per Qtr	December	January	February	FYTD
Dust Deposition Exceedance	Nil	Nil	Nil	Nil	Nil
Total Suspended Particulates Exceedance	Nil	Nil	Nil	Nil	Nil
Noise Levels Exceedance	Nil	Nil	Nil	Nil	Nil

NB: Receipt of validated noise and dust deposition data is generally one month behind.

Vessel Performance

Number of Vessels

Vessel Mix

	Units	January	February	March	FYTD
Handy	Ships	1	1	1	12
Panamax	Ships	6	5	6	58
Japmax	Ships	17	11	9	122
Cape	Ships	21	27	24	215

Number of Parcels Per Vessel

Handy	parcels/vessel	1.0	1.0	1.0	1.0
Panamax	parcels/vessel	1.3	1.0	1.2	1.2
Japmax	parcels/vessel	1.1	1.1	1.2	1.1
Cape	parcels/vessel	2.6	2.6	2.3	2.4

Vessel Mix

Handy	%	0.8%	0.8%	1.1%	1.2%
Panamax	%	8.7%	5.7%	7.5%	8.5%
Japmax	%	27.3%	16.3%	16.1%	20.7%
Cape	%	63.3%	77.2%	75.2%	69.7%
Total Tonnes	t	4,956,532	5,105,947	4,817,110	46,173,823

Vessel Queuing

Average Daily Total Vessels in Queue	Vessels	15.5	10.0	20.2	13.2
Average Daily Vessels with Unavailable Cargo	Vessels	9.6	4.6	5.5	6.0
Average Days at Anchor	days	16.4	15.8	15.1	13.4

** Unavailable Cargo: Any vessel in the queue that does not have all parcels/products available at the mine/s.

Operating Efficiency Outloading

