

Performance Indicators

Operational Performance

System Delivery

	Units	October	November	December	YTD
No of Trains Delivered to the Terminal					
Actual	trains	545	488	460	3008
Scheduled	trains	672	636	610	3647
No of Tonnes to be Delivered to the Terminal					
Actual	tonnes	5,397,260	4,783,971	4,534,907	29,865,458
Scheduled	tonnes	6,787,200	6,423,600	6,161,000	36,834,700

Inloading Performance

Average Terminal Unload Time	hrs:min	2:14	2:13	2:08	2:14
Average Train Unload Time	hrs:min	1:49	1:49	1:45	1:48

Yard Performance

Average Build Time / Parcel	days	4.3	4.7	4.6	4.3
Average Residence Time / Parcel	days	2.3	2.7	2.2	2.6

Outloading 1 Performance - L5

Utilisation	%	99.8%	98.6%	89.0%	79.5%
Average Outloading Rate	tph	2853659	1678444	1914553	14625686

Outloading 2 Performance - L6

Utilisation	%	20.2%	98.5%	100.0%	78.7%
Average Outloading Rate	tph	4278	4441	4347	4313

Outloading 3 Performance - L15

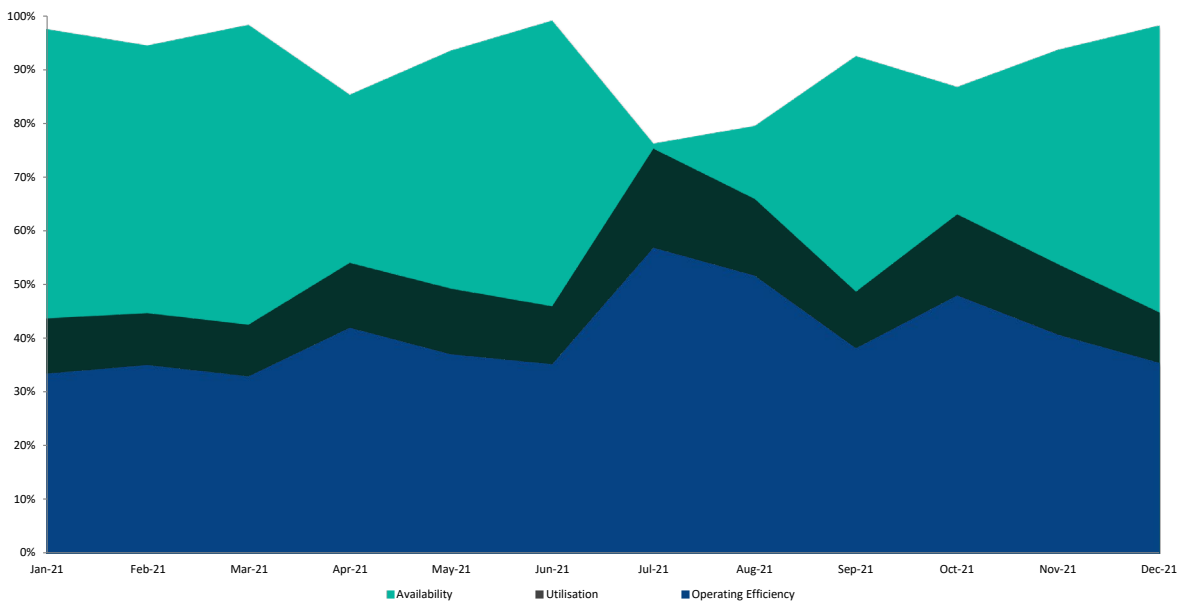
Utilisation	%	99.2%	75.4%	97.5%	93.6%
Average Outloading Rate	tph	4912	4540	4514	4546

***Utilisation is a measurement of an entire system string. e.g. Outloading 1 to Shiploader 1.*

Average Outloading Gross Rates

Handy	tph	3032	3422	2324	3023
Panamax	tph	3961	3893	4528	4116
Japmax	tph	4748	4779	4735	4706
Cape	tph	5352	4838	5077	5154

Operating Efficiency Inloading



Performance Indicators

Operational Performance

Environmental Licence Performance

	Per Qtr	September	October	November	YTD
Dust Deposition Exceedance	Nil	Nil	Nil	Nil	Nil
Total Suspended Particulates Exceedance	Nil	Nil	Nil	Nil	Nil
Noise Levels Exceedance	Nil	Nil	Nil	Nil	Nil

NB: Receipt of validated noise and dust deposition data is generally one month behind.

Vessel Performance

Number of Vessels

Vessel Mix

	Units	October	November	December	YTD
Handy	Ships	2	1	1	9
Panamax	Ships	9	11	3	40
Japmax	Ships	34	26	27	167
Cape	Ships	13	19	14	109

Average Parcels Per Vessel

Handy	parcels/vessel	1.0	1.0	1.0	1.1
Panamax	parcels/vessel	1.6	1.6	1.0	1.5
Japmax	parcels/vessel	1.2	1.1	1.4	1.2
Cape	parcels/vessel	1.9	1.7	1.9	2.0

Vessel Mix

Handy	%	1.4%	0.9%	1.1%	1.4%
Panamax	%	10.0%	14.9%	5.0%	8.7%
Japmax	%	54.5%	38.9%	52.3%	43.9%
Cape	%	34.1%	45.3%	41.7%	46.0%

Total Tonnes

t	4,975,564	5,104,433	4,044,860	29,229,392
---	-----------	-----------	-----------	------------

Vessel Queuing

Average Daily Total Vessels in Queue	Vessels	9.6	12.9	18.3	13.7
Average Daily Vessels with Unavailable Cargo	Vessels	3.7	7.9	12.9	6.7
Average Days at Anchor	days	5.4	4.9	9.6	7.2
Average Days at Anchor after Coal is Available	days	2.9	2.5	2.7	3.7

*** Unavailable Cargo: Any vessel in the queue that does not have all parcels/products available at the mine/s.*

***Weightometer tonnes are used in this report and cut-offs are last wagon and last coal for inloading and outloading respectively*

Operating Efficiency Outloading

