

# Performance Indicators

## System Delivery

	Units	October	November	December	YTD
No of Trains Delivered to the Terminal					
Actual	trains	654	535	613	3752
Scheduled	trains	709	587	665	4089
No of Tonnes to be Delivered to the Terminal					
Actual	tonnes	6,478,949	5,175,769	6,065,997	36,999,465
Scheduled	tonnes	7,160,900	5,928,700	6,716,500	41,298,900

## Inloading Performance

Average Terminal Unload Time	hrs:min	2:10	2:02	2:16	2:09
Average Train Unload Time	hrs:min	1:47	1:40	1:53	1:46

## Yard Performance

Average Build Time / Parcel	days	3.1	3.0	3.7	3.2
Average Residence Time / Parcel	days	1.0	1.3	0.8	1.3

## Outloading 1 Performance - L5

Utilisation	%	63.0%	65.3%	58.4%	53.1%
Average Outloading Rate	tph	4197	4308	4365	4379

## Outloading 2 Performance - L6

Utilisation	%	63.5%	58.2%	57.5%	67.9%
Average Outloading Rate	tph	5110	5077	4359	4758

## Outloading 3 Performance - L15

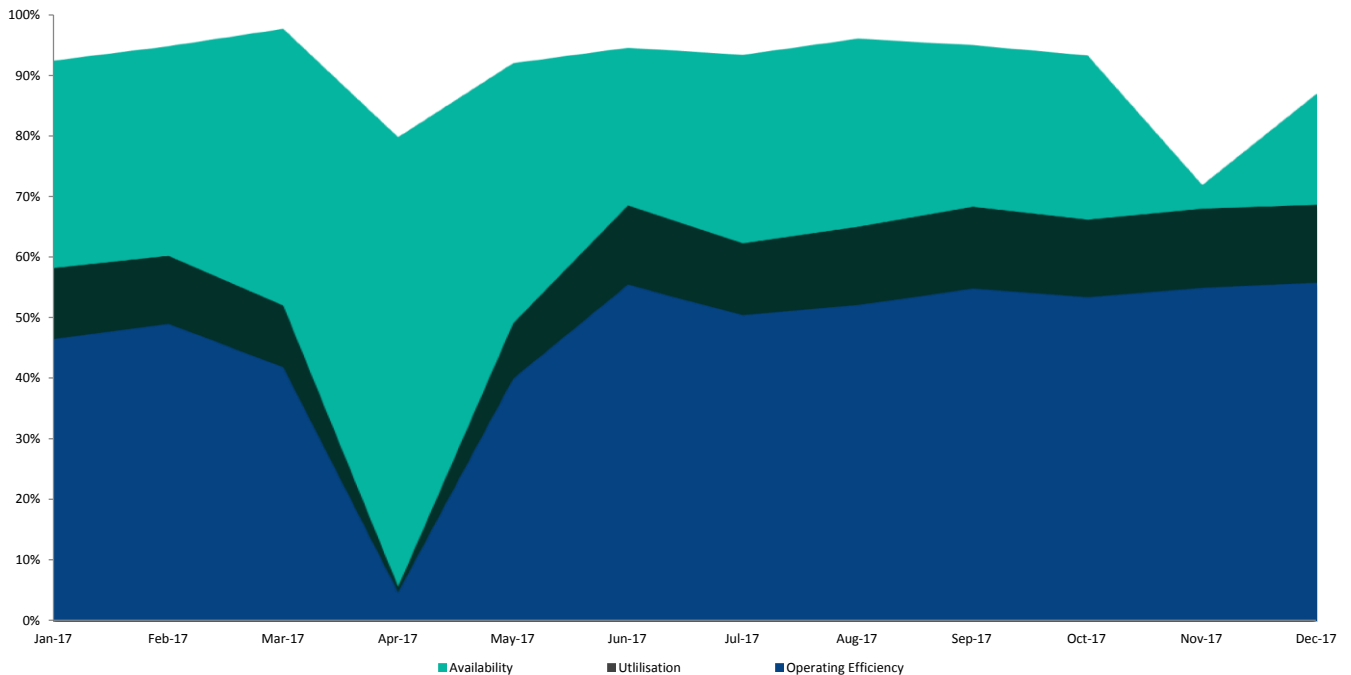
Utilisation	%	78.5%	83.7%	65.1%	80.8%
Average Outloading Rate	tph	5384	5316	5445	5232

*\*\*Utilisation is a measurement of an entire system string. e.g. Outloading 1 to Shiploader 1.*

## Average Outloading Gross Rates

Handy	tph	2971	3104	3328	3178
Panamax	tph	4451	4504	4626	4251
Japmax	tph	4718	4922	4462	4879
Cape	tph	5308	5041	5181	5044

## Operating Efficiency Inloading



# Performance Indicators

## Operational Performance

### Environmental Licence Performance

	Per Qtr	September	October	November	YTD
Dust Deposition Exceedance	1	1	Nil	Nil	1
Total Suspended Particulates Exceedance	Nil	Nil	Nil	Nil	Nil
Noise Levels Exceedance	Nil	Nil	Nil	Nil	Nil

*NB: Receipt of validated noise and dust deposition data is generally one month behind.*

### Vessel Performance

#### Number of Vessels

#### Vessel Mix

	Units	October	November	December	YTD
Handy	Ships	2	2	3	14
Panamax	Ships	12	9	10	51
Japmax	Ships	32	21	23	146
Cape	Ships	23	21	21	151

### Number of Parcels Per Vessel

Handy	parcels/vessel	1.0	1.0	1.3	1.1
Panamax	parcels/vessel	1.1	1.2	1.1	1.2
Japmax	parcels/vessel	1.0	1.2	1.0	1.1
Cape	parcels/vessel	1.9	2.2	2.2	2.1

### Vessel Mix

Handy	%	1.4%	1.7%	2.4%	1.8%
Panamax	%	11.9%	12.5%	12.2%	9.4%
Japmax	%	37.9%	32.4%	32.6%	31.4%
Cape	%	48.8%	53.4%	52.9%	57.4%

### Total Tonnes

t	6,659,449	5,201,343	5,872,883	37,033,064
---	-----------	-----------	-----------	------------

### Vessel Queuing

Average Daily Total Vessels in Queue	Vessels	36.3	40.0	50.0	37.8
Average Daily Vessels with Unavailable Cargo	Vessels	1.5	2.2	3.8	1.7
Average Days at Anchor	days	14.0	19.8	25.1	15.6
Average Days at Anchor after Coal is Available	days	12.6	17.7	23.3	13.9

*\*\* Unavailable Cargo: Any vessel in the queue that does not have all parcels/products available at the mine/s.*

*\*\*Weightometer tonnes are used in this report and cut-offs are last wagon and last coal for inloading and outloading respectively*

### Operating Efficiency Outloading

