

# Performance Indicators

## Operational Performance

### System Delivery

	Units	January	February	March	YTD	
No of Trains Delivered to the Terminal	Actual	trains	559	561	524	5181
	Scheduled	trains	652	626	706	5896
No of Tonnes to be Delivered to the Terminal	Actual	tonnes	5,580,895	5,578,020	5,176,244	51,549,365
	Scheduled	tonnes	6,585,200	6,322,600	7,130,600	59,549,600

### Inloading Performance

Average Terminal Unload Time	hrs:min	2:12	2:07	2:10	2:09
Average Train Unload Time	hrs:min	1:48	1:44	1:46	1:45

### Yard Performance

Average Build Time / Parcel	days	3.4	3.4	3.2	3.3
Average Residence Time / Parcel	days	2.7	2.8	1.9	2.4

### Outloading 1 Performance - L5

Utilisation	%	49.7%	58.8%	56.4%	63.9%
Average Outloading Rate	tph	4395	4398	4917	4420

### Outloading 2 Performance - L6

Utilisation	%	55.7%	70.1%	61.4%	62.6%
Average Outloading Rate	tph	4619	4815	4546	4644

### Outloading 3 Performance - L15

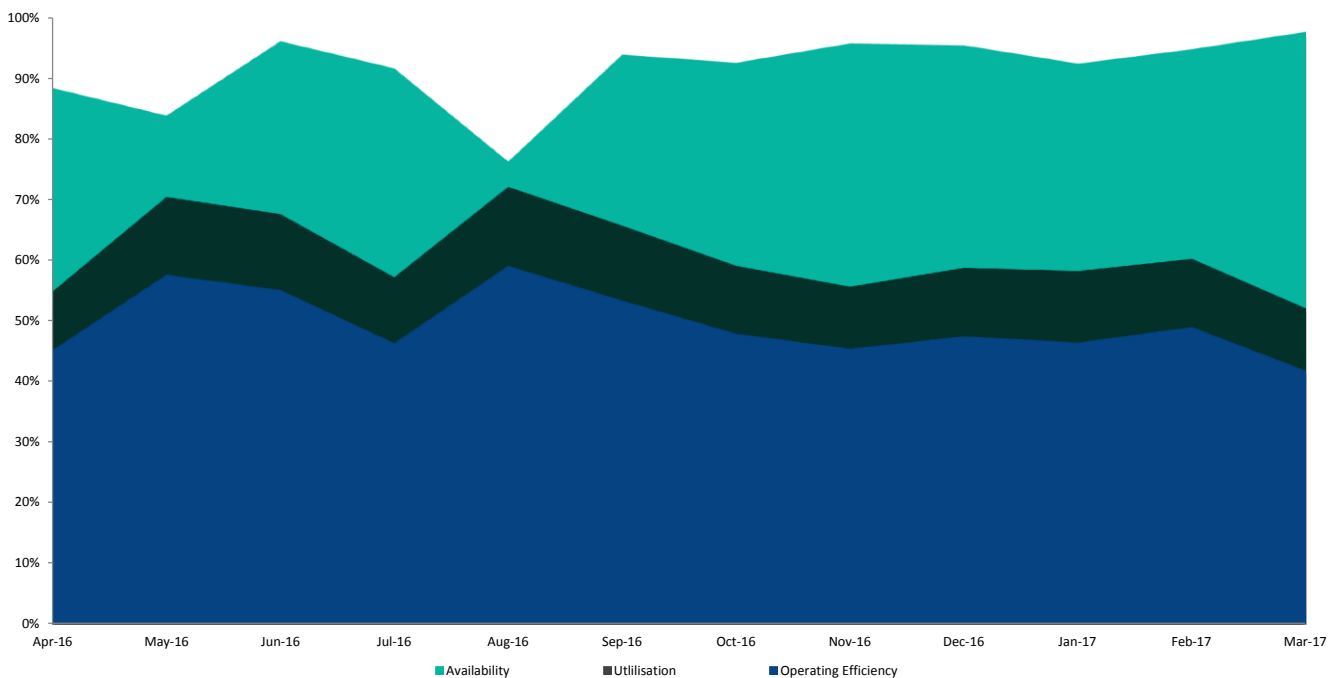
Utilisation	%	68.8%	70.8%	69.3%	77.2%
Average Outloading Rate	tph	4646	4912	4833	4884

*\*\*Utilisation is a measurement of an entire system string. e.g. Outloading 1 to Shiploader 1.*

### Average Outloading Gross Rates

Handy	tph	3128	3268	3313	3375
Panamax	tph	4149	4745	4474	4257
Japmax	tph	4287	4677	4714	4715
Cape	tph	4805	4846	4933	4830

### Operating Efficiency Inloading



# Performance Indicators

## Operational Performance

### Environmental Licence Performance

	Per Qtr	December	January	February	YTD
Dust Deposition Exceedance	Nil	Nil	Nil	Nil	Nil
Total Suspended Particulates Exceedance	Nil	Nil	Nil	Nil	Nil
Noise Levels Exceedance		Nil	Nil	Not Available	Nil

NB: Receipt of validated noise and dust deposition data is generally one month behind.

### Vessel Performance

#### Number of Vessels

#### Vessel Mix

	Units	January	February	March	YTD
Handy	Ships	3	3	4	35
Panamax	Ships	4	5	6	60
Japmax	Ships	18	20	20	204
Cape	Ships	26	26	20	215

### Number of Parcels Per Vessel

Handy	parcels/vessel	1.0	1.0	1.0	1.0
Panamax	parcels/vessel	1.5	1.0	1.2	1.2
Japmax	parcels/vessel	1.3	1.3	1.2	1.2
Cape	parcels/vessel	2.1	2.2	1.9	2.2

### Vessel Mix

Handy	%	2.6%	2.2%	3.7%	3.1%
Panamax	%	4.7%	5.4%	7.9%	7.6%
Japmax	%	25.2%	28.2%	32.1%	30.9%
Cape	%	67.5%	64.2%	56.3%	58.3%

### Total Tonnes

t	5,308,639	5,783,083	5,059,595	51,513,758
---	-----------	-----------	-----------	------------

### Vessel Queuing

Average Daily Total Vessels in Queue	Vessels	13.4	18.0	17.5	13.9
Average Daily Vessels with Unavailable Cargo	Vessels	4.7	3.5	1.0	3.0
Average Days at Anchor	days	9.0	8.6	8.8	7.3
Average Days at Anchor after Coal is Available	days	4.9	5.2	5.2	4.2

\*\* Unavailable Cargo: Any vessel in the queue that does not have all parcels/products available at the mine/s.

\*\*Weightometer tonnes are used in this report and cut-offs are last wagon and last coal for inloading and outloading respectively

### Operating Efficiency Outloading

