

Performance Indicators

Operational Performance

System Delivery

	Units	January	February	March	YTD	
No of Trains Delivered to the Terminal	Actual	trains	592	581	626	5500
	Scheduled	trains	662	671	665	6084
No of Tonnes to be Delivered to the Terminal	Actual	tonnes	5,726,593	5,731,267	6,181,062	53,988,469
	Scheduled	tonnes	6,487,600	6,575,800	6,517,000	59,623,200

Inloading Performance

Average Terminal Unload Time	hrs:min	2:10	2:13	2:09	2:12
Average Train Unload Time	hrs:min	1:49	1:50	1:47	1:51

Yard Performance

Average Stock Build Time / Parcel	days	2.5	3.1	2.4	2.8
Average Stock Residence Time / Parcel	days	1.9	2.0	2.4	2.2

Outloading 1 Performance - L5

Utilisation	%	50.0%	46.1%	50.2%	64.5%
Average Outloading Rate	tph	4323	4787	4405	4385

Outloading 2 Performance - L6

Utilisation	%	59.3%	58.8%	68.0%	73.7%
Average Outloading Rate	tph	4356	4514	4717	4347

Outloading 3 Performance - L15

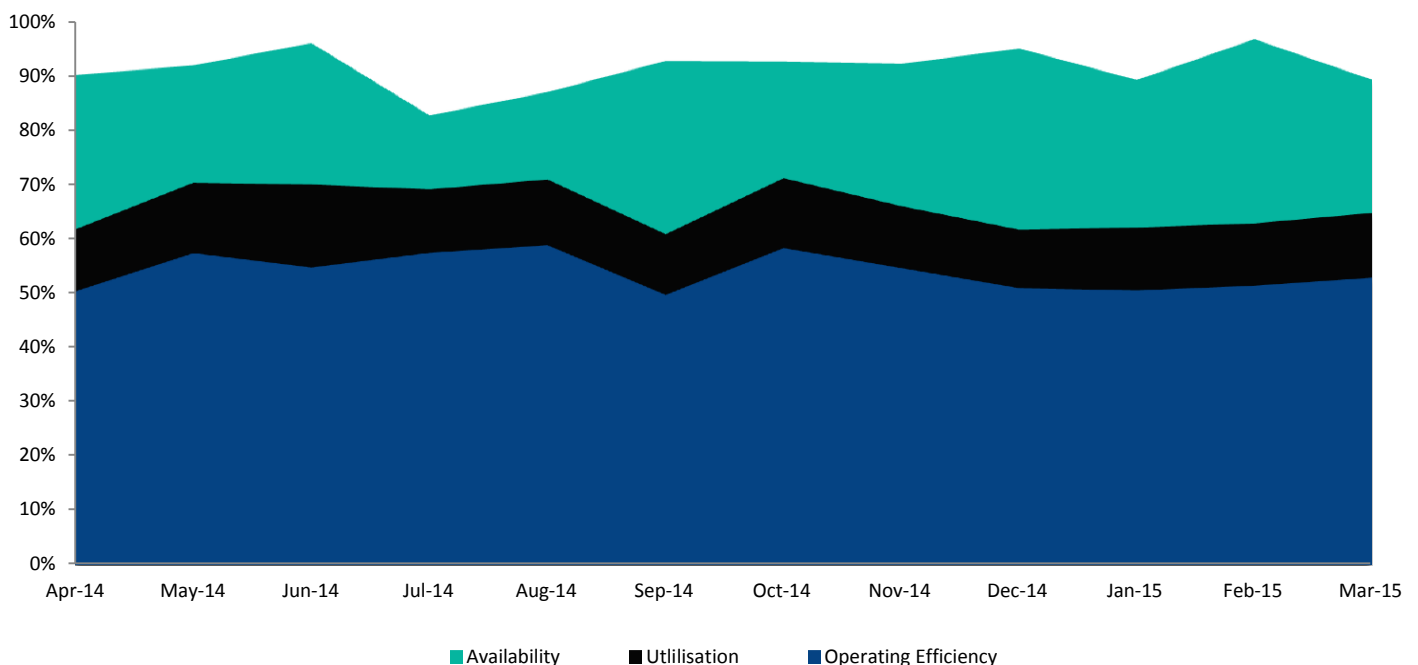
Utilisation	%	74.0%	79.5%	91.5%	82.9%
Average Outloading Rate	tph	4596	4966	5099	4872

** Utilisation is a measurement of an entire system string. e.g. Outloading 1 to Shiploader 1.

Average Outloading Rates

Handy	tph	3298	2838	3582	3224
Panamax	tph	3720	4629	4155	4347
Japmax	tph	4844	4806	4930	4645
Cape	tph	4575	4857	4920	4690

Operating Efficiency Inloading



Performance Indicators

Operational Performance

Environmental Licence Performance

	Per Qtr	December	January	February	YTD
Dust Deposition Exceedance	Nil	Nil	Nil	Nil	Nil
Total Suspended Particulates Exceedance	Nil	Nil	Nil	Nil	Nil
Noise Levels Exceedance	Nil	Nil	Nil	Nil	Nil

NB: Receipt of validated noise and dust deposition data is generally one month behind.

Vessel Performance

Number of Vessels

Vessel Mix

	Units	January	February	March	YTD
Handy	Ships	5	1	1	31
Panamax	Ships	11	10	8	95
Japmax	Ships	20	24	18	167
Cape	Ships	24	18	29	233

Number of Parcels Per Vessel

Handy	parcels/vessel	1.0	1.0	1.0	1.1
Panamax	parcels/vessel	1.4	1.3	1.1	1.2
Japmax	parcels/vessel	1.2	1.1	1.2	1.2
Cape	parcels/vessel	2.3	2.3	2.3	2.3

Vessel Mix

Handy	%	3.7%	0.6%	0.5%	2.5%
Panamax	%	12.5%	13.7%	8.2%	11.8%
Japmax	%	25.3%	35.4%	22.0%	24.5%
Cape	%	58.6%	50.3%	69.2%	61.2%

Total Tonnes

t	5,793,969	5,153,840	6,347,078	56,168,505
---	-----------	-----------	-----------	------------

Vessel Queuing

Average Daily Total Vessels in Queue	Vessels	13.4	11.2	9.2	17.1
Average Daily Vessels with Unavailable Cargo	Vessels	6.7	1.3	0.9	8.2
Average Days at Anchor	days	8.6	7.1	4.9	9.3

*** Unavailable Cargo: Any vessel in the queue that does not have all parcels/products available at the mine/s.*

Operating Efficiency Outloading

