

# Performance Indicators

## Operational Performance

### System Delivery

	Units	October	November	December	FYTD	
No of Trains Delivered to the Terminal	Actual	trains	633	589	592	3560
	Scheduled	trains	684	683	663	3999

### No of Tonnes to be Delivered to the Terminal

Actual	tonnes	6,096,396	5,783,649	5,726,856	38,370,296
Scheduled	tonnes	6,703,200	6,693,400	6,497,400	39,190,200

### Inloading Performance

Average Terminal Unload Time	hrs:min	2:10	2:14	2:10	2:18
Average Train Unload Time	hrs:min	1:47	1:52	1:50	1:55

### Yard Performance

Average Stock Build Time / Parcel	days	2.8	3.0	2.4	2.7
Average Stock Residence Time / Parcel	days	1.3	1.4	1.5	1.2

### Outloading 1 Performance - L5

Utilisation	%	62.7%	61.5%	51.5%	69.2%
Average Outloading Rate	tph	4719	4217	4312	4578

### Outloading 2 Performance - L6

Utilisation	%	67.5%	71.8%	59.5%	53.1%
Average Outloading Rate	tph	4621	4279	4187	4432

### Outloading 3 Performance - L15

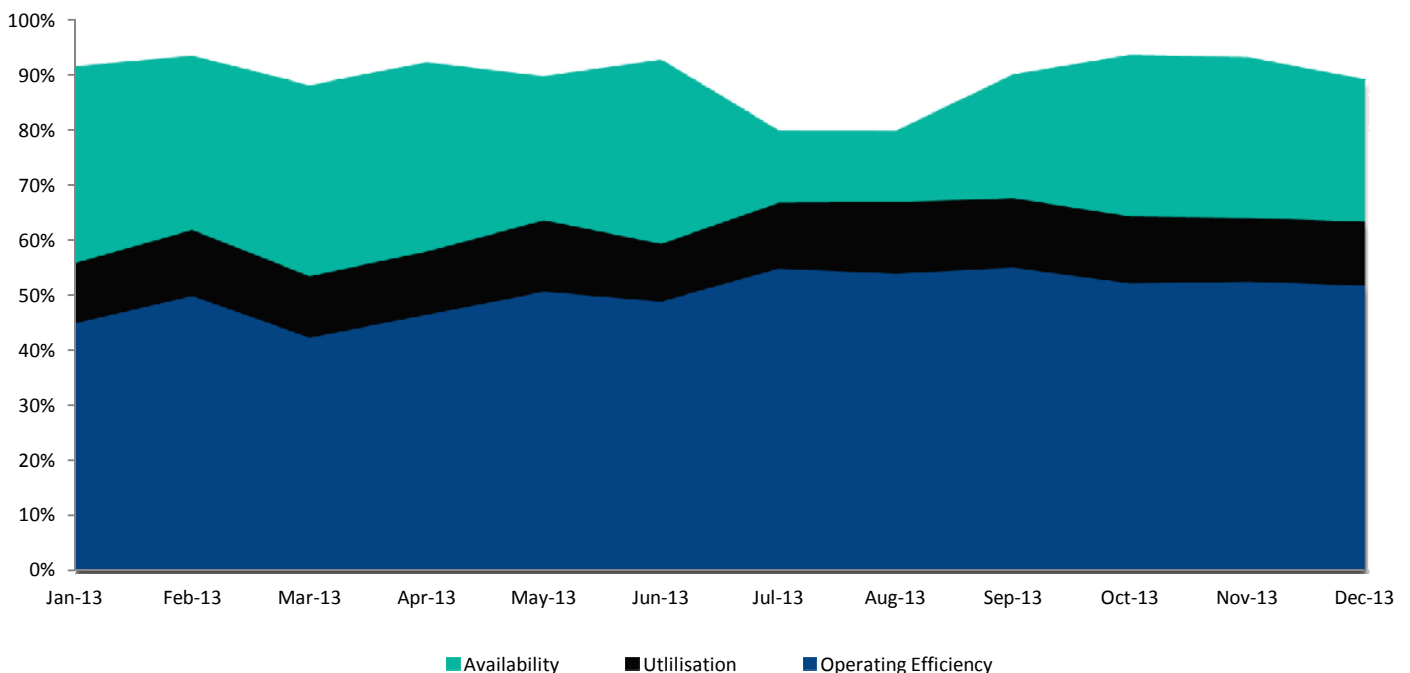
Utilisation	%	82.1%	94.6%	82.0%	84.6%
Average Outloading Rate	tph	4728	4866	4955	4940

\*\* Utilisation is a measurement of an entire system string. e.g. Outloading 1 to Shiploader 1.

### Average Outloading Rates

Handy	tph	3543	3015	3029	3178
Panamax	tph	4708	4429	4336	4476
Japmax	tph	4769	5009	4707	4857
Cape	tph	4741	4572	4784	4827

### Operating Efficiency Inloading



# Performance Indicators

## Operational Performance

### Environmental Licence Performance

	Per Qtr	September	October	November	FYTD
Dust Deposition Exceedance	1	Nil	1	Nil	1
Total Suspended Particulates Exceedance	Nil	Nil	Nil	Nil	Nil
Noise Levels Exceedance	Nil	Nil	Nil	Nil	Nil

*NB: Receipt of validated noise and dust deposition data is generally one month behind.*

### Vessel Performance

#### Number of Vessels

#### Vessel Mix

	Units	October	November	December	FYTD
Handy	Ships	5	6	6	30
Panamax	Ships	11	7	14	53
Japmax	Ships	25	18	17	111
Cape	Ships	17	25	22	140

### Number of Parcels Per Vessel

Handy	parcels/vessel	1.2	1.2	1.0	1.1
Panamax	parcels/vessel	1.4	1.0	1.1	1.1
Japmax	parcels/vessel	1.2	1.2	1.4	1.2
Cape	parcels/vessel	2.9	2.1	2.5	2.3

### Vessel Mix

Handy	%	3.7%	4.4%	4.6%	3.8%
Panamax	%	13.3%	7.4%	17.3%	10.4%
Japmax	%	34.5%	24.6%	24.0%	25.9%
Cape	%	48.5%	63.7%	54.2%	59.9%

### Total Tonnes

t	5,816,406	5,926,087	5,711,857	34,296,942
---	-----------	-----------	-----------	------------

### Vessel Queuing

Average Daily Total Vessels in Queue	Vessels	23.1	20.5	24.6	21.3
Average Daily Vessels with Unavailable Cargo	Vessels	1.7	8.2	10.0	4.2
Average Days at Anchor	days	12.5	9.9	14.5	11.8

*\*\* Unavailable Cargo: Any vessel in the queue that does not have all parcels/products available at the mine/s.*

### Operating Efficiency Outloading

