

Performance Indicators

Operational Performance

System Delivery

| | Units | January | February | March | YTD | |
|--|-----------|---------|-----------|-----------|-----------|------------|
| No of Trains Delivered to the Terminal | Actual | trains | 424 | 397 | 429 | 3927 |
| | Scheduled | trains | 494 | 444 | 499 | 4512 |
| No of Tonnes to be Delivered to the Terminal | Actual | tonnes | 4,267,787 | 3,911,647 | 4,304,254 | 39,212,474 |
| | Scheduled | tonnes | 4,989,400 | 4,484,400 | 5,039,900 | 45,571,200 |

Inloading Performance

| | | | | | |
|------------------------------|---------|------|------|------|------|
| Average Terminal Unload Time | hrs:min | 2:14 | 2:09 | 2:10 | 2:11 |
| Average Train Unload Time | hrs:min | 1:51 | 1:45 | 1:46 | 1:47 |

Yard Performance

| | | | | | |
|---------------------------------|------|-----|-----|-----|-----|
| Average Build Time / Parcel | days | 4.4 | 3.8 | 4.6 | 4.3 |
| Average Residence Time / Parcel | days | 4.4 | 3.3 | 1.8 | 3.6 |

Outloading 1 Performance - L5

| | | | | | |
|-------------------------|-----|---------|---------|---------|----------|
| Utilisation | % | 91.8% | 100.0% | 83.1% | 84.4% |
| Average Outloading Rate | tph | 2201085 | 2363481 | 2182858 | 22071905 |

Outloading 2 Performance - L6

| | | | | | |
|-------------------------|-----|-------|-------|-------|-------|
| Utilisation | % | 86.2% | 92.6% | 98.8% | 80.8% |
| Average Outloading Rate | tph | 4118 | 4286 | 3990 | 4399 |

Outloading 3 Performance - L15

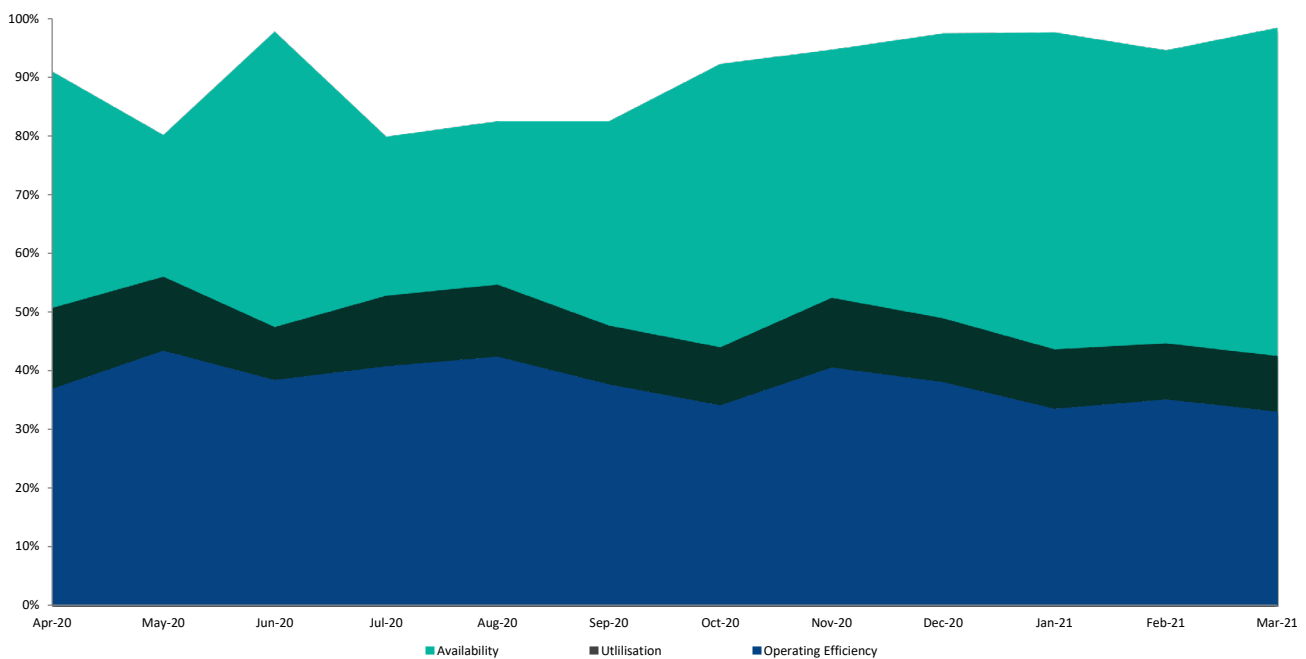
| | | | | | |
|-------------------------|-----|-------|-------|-------|-------|
| Utilisation | % | 98.6% | 97.9% | 92.4% | 97.6% |
| Average Outloading Rate | tph | 4161 | 4930 | 4233 | 4587 |

***Utilisation is a measurement of an entire system string. e.g. Outloading 1 to Shiploader 1.*

Average Outloading Gross Rates

| | | | | | |
|---------|-----|------|------|------|------|
| Handy | tph | 3942 | 4474 | 3997 | 3839 |
| Panamax | tph | 3825 | 3870 | 4166 | 4091 |
| Japmax | tph | 4593 | 4922 | 4492 | 4922 |
| Cape | tph | 4829 | 5524 | 5164 | 5273 |

Operating Efficiency Inloading



Performance Indicators

Operational Performance

Environmental Licence Performance

| | Per Qtr | December | January | February | YTD |
|---|---------|----------|---------|----------|-----|
| Dust Deposition Exceedance | Nil | Nil | Nil | Nil | Nil |
| Total Suspended Particulates Exceedance | Nil | Nil | Nil | Nil | Nil |
| Noise Levels Exceedance | Nil | Nil | Nil | Nil | Nil |

NB: Receipt of validated noise and dust deposition data is generally one month behind.

Vessel Performance

Number of Vessels

Vessel Mix

| | Units | January | February | March | YTD |
|---------|-------|---------|----------|-------|-----|
| Handy | Ships | 3 | 1 | 3 | 20 |
| Panamax | Ships | 9 | 4 | 8 | 60 |
| Japmax | Ships | 21 | 28 | 13 | 231 |
| Cape | Ships | 11 | 11 | 13 | 110 |

Number of Parcels Per Vessel

| | | | | | |
|---------|----------------|-----|-----|-----|-----|
| Handy | parcels/vessel | 1.3 | 1.0 | 1.3 | 1.2 |
| Panamax | parcels/vessel | 1.7 | 1.3 | 1.1 | 1.3 |
| Japmax | parcels/vessel | 1.1 | 1.2 | 1.2 | 1.2 |
| Cape | parcels/vessel | 2.3 | 2.2 | 2.0 | 2.2 |

Vessel Mix

| | | | | | |
|---------|---|-------|-------|-------|-------|
| Handy | % | 3.8% | 1.3% | 4.3% | 2.6% |
| Panamax | % | 15.0% | 5.8% | 14.5% | 9.9% |
| Japmax | % | 41.8% | 51.6% | 31.5% | 47.7% |
| Cape | % | 39.4% | 41.4% | 49.6% | 39.7% |

Total Tonnes

| | | | | |
|---|-----------|-----------|-----------|------------|
| t | 3,991,518 | 4,285,455 | 3,484,248 | 38,600,696 |
|---|-----------|-----------|-----------|------------|

Vessel Queuing

| | | | | | |
|--|---------|------|------|-----|------|
| Average Daily Total Vessels in Queue | Vessels | 13.5 | 12.8 | 8.5 | 10.2 |
| Average Daily Vessels with Unavailable Cargo | Vessels | 9.3 | 9.3 | 3.8 | 5.7 |
| Average Days at Anchor | days | 9.0 | 5.0 | 6.1 | 6.7 |
| Average Days at Anchor after Coal is Available | days | 3.0 | 2.1 | 2.9 | 2.8 |

*** Unavailable Cargo: Any vessel in the queue that does not have all parcels/products available at the mine/s.*

***Weightometer tonnes are used in this report and cut-offs are last wagon and last coal for inloading and outloading respectively*

Operating Efficiency Outloading

