

Performance Indicators

Operational Performance

System Delivery

	Units	October	November	December	YTD
No of Trains Delivered to the Terminal					
Actual	trains	530	507	684	3399
Scheduled	trains	566	545	733	3658
No of Tonnes to be Delivered to the Terminal					
Actual	tonnes	5,250,177	4,980,340	6,654,850	33,352,625
Scheduled	tonnes	5,716,600	5,504,500	7,403,300	36,945,800

Inloading Performance

Average Terminal Unload Time	hrs:min	2:07	2:18	2:07	2:08
Average Train Unload Time	hrs:min	1:47	1:54	1:44	1:45

Yard Performance

Average Build Time / Parcel	days	3.4	2.9	2.9	3.1
Average Residence Time / Parcel	days	2.4	1.5	1.2	1.5

Outloading 1 Performance - L5

Utilisation	%	55.5%	61.0%	57.1%	53.7%
Average Outloading Rate	tph	4534	4125	4232	4290

Outloading 2 Performance - L6

Utilisation	%	48.3%	63.5%	54.5%	53.1%
Average Outloading Rate	tph	5005	5179	4920	4920

Outloading 3 Performance - L15

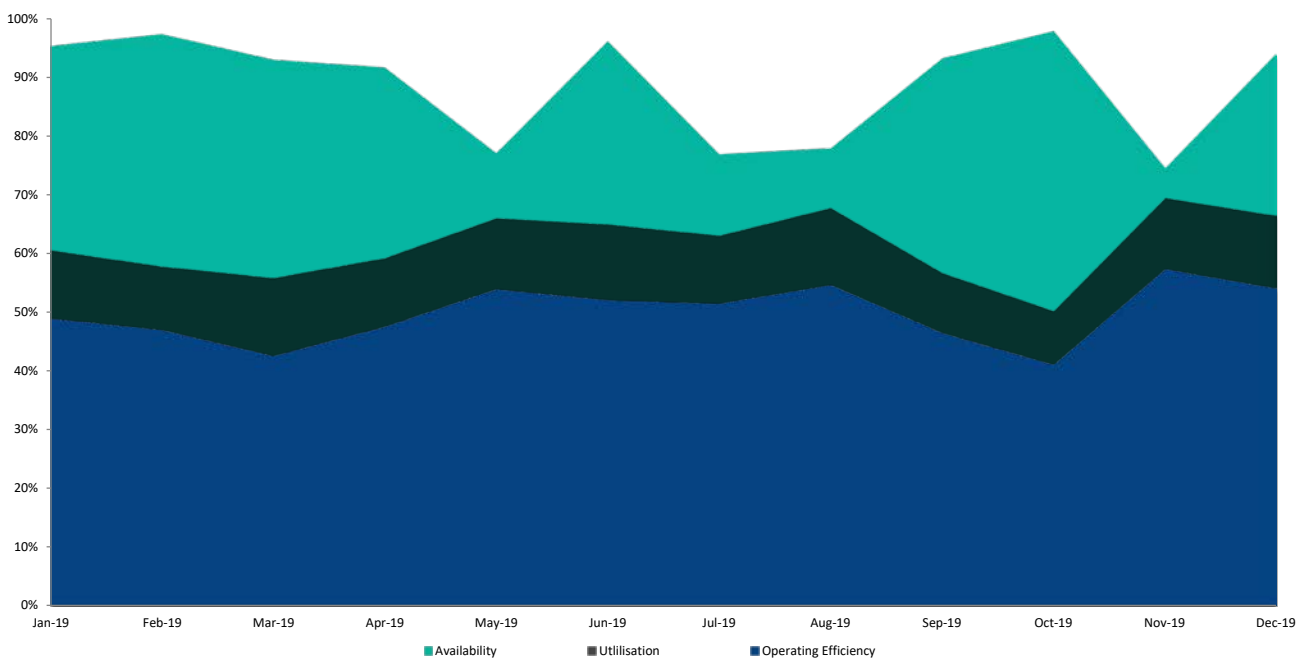
Utilisation	%	56.6%	78.5%	86.1%	75.4%
Average Outloading Rate	tph	5660	5158	5262	5483

***Utilisation is a measurement of an entire system string. e.g. Outloading 1 to Shiploader 1.*

Average Outloading Gross Rates

Handy	tph	2359	3305	3626	3433
Panamax	tph	4775	4901	4466	4455
Japmax	tph	5126	4989	4767	4909
Cape	tph	5276	4500	5439	5274

Operating Efficiency Inloading



Performance Indicators

Operational Performance

Environmental Licence Performance

	Per Qtr	September	October	November	YTD
Dust Deposition Exceedance	Nil	Nil	Nil	Nil	Nil
Total Suspended Particulates Exceedance	Nil	Nil	Nil	Nil	Nil
Noise Levels Exceedance	Nil	Nil	Nil	Nil	Nil

NB: Receipt of validated noise and dust deposition data is generally one month behind.

Vessel Performance

Number of Vessels

Vessel Mix

	Units	October	November	December	YTD
Handy	Ships	2	2	6	19
Panamax	Ships	7	9	7	47
Japmax	Ships	25	24	45	166
Cape	Ships	17	15	15	105

Number of Parcels Per Vessel

Handy	parcels/vessel	1.0	2.0	1.0	1.2
Panamax	parcels/vessel	1.4	1.2	1.3	1.3
Japmax	parcels/vessel	1.2	1.2	1.2	1.3
Cape	parcels/vessel	2.1	2.2	2.0	2.0

Vessel Mix

Handy	%	1.9%	2.2%	4.6%	2.9%
Panamax	%	8.7%	13.3%	7.6%	9.6%
Japmax	%	39.1%	40.8%	56.3%	41.0%
Cape	%	50.3%	43.7%	31.4%	46.4%

Total Tonnes

t	5,355,119	4,881,970	6,637,060	33,318,009
---	-----------	-----------	-----------	------------

Vessel Queuing

Average Daily Total Vessels in Queue	Vessels	21.4	19.8	21.9	24.9
Average Daily Vessels with Unavailable Cargo	Vessels	16.2	12.0	8.1	12.4
Average Days at Anchor	days	12.8	14.0	8.7	13.6
Average Days at Anchor after Coal is Available	days	2.8	4.1	5.5	7.1

*** Unavailable Cargo: Any vessel in the queue that does not have all parcels/products available at the mine/s.*

***Weightometer tonnes are used in this report and cut-offs are last wagon and last coal for inloading and outloading respectively*

Operating Efficiency Outloading

