

Performance Indicators

Operational Performance

System Delivery

	Units	July	August	September	YTD	
No of Trains Delivered to the Terminal	Actual	trains	498	737	591	1826
	Scheduled	trains	608	899	706	2213
No of Tonnes to be Delivered to the Terminal	Actual	tonnes	4,841,274	7,086,370	5,686,612	17,614,256
	Scheduled	tonnes	6,140,800	9,079,900	7,130,600	22,351,300

Inloading Performance

Average Terminal Unload Time	hrs:min	2:11	2:17	2:14	2:15
Average Train Unload Time	hrs:min	1:47	1:51	1:49	1:49

Yard Performance

Average Build Time / Parcel	days	7.0	5.0	5.4	5.4
Average Residence Time / Parcel	days	2.6	2.2	3.0	2.8

Outloading 1 Performance - L5

Utilisation	%	13.8%	61.4%	67.7%	11.9%
Average Outloading Rate	tph	4357	4096	4434	4284

Outloading 2 Performance - L6

Utilisation	%	46.2%	69.1%	56.6%	14.3%
Average Outloading Rate	tph	5027	4961	4978	4983

Outloading 3 Performance - L15

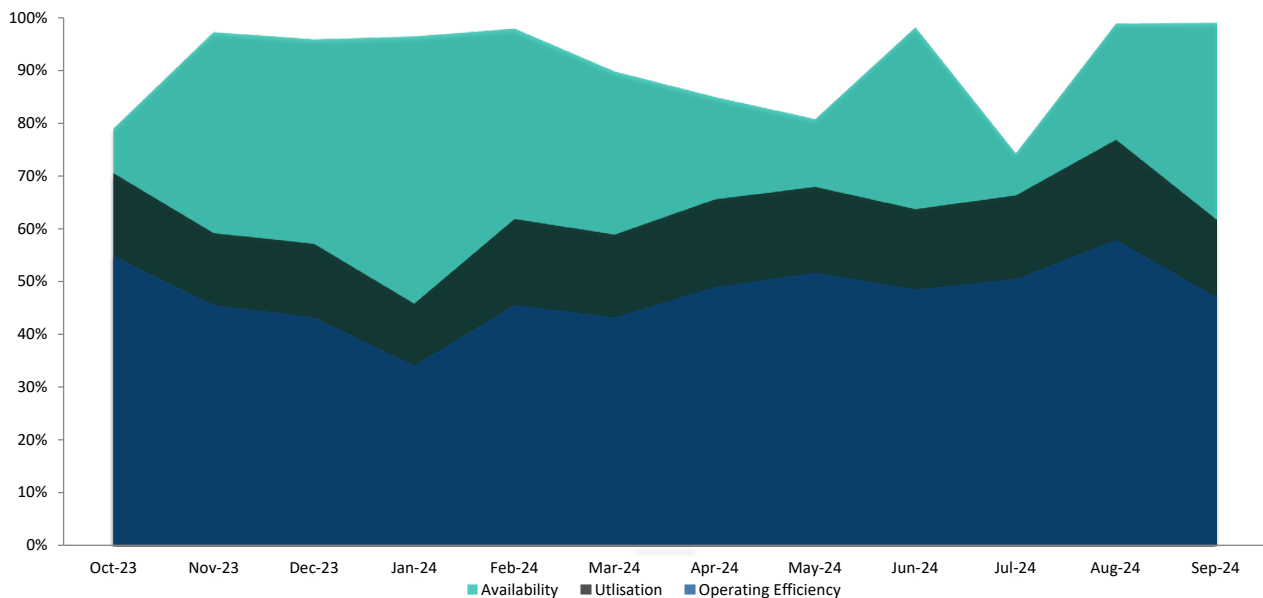
Utilisation	%	80.4%	89.4%	63.0%	19.4%
Average Outloading Rate	tph	5530	5465	5321	5451

***Utilisation is a measurement of an entire system string. e.g. Outloading 1 to Shiploader 1.*

Average Outloading Gross Rates

Handy	tph	4685	2586	0	3534
Panamax	tph	4692	4051	4404	4359
Japmax	tph	5168	4878	4824	4926
Cape	tph	5618	5368	5257	5407

Operating Efficiency Inloading



Performance Indicators

Operational Performance

Environmental Licence Performance

	Per Qtr	June	July	August	YTD
Dust Deposition Exceedance	Nil	Nil	Nil	Nil	Nil
Total Suspended Particulates Exceedance	Nil	Nil	Nil	Nil	Nil
Noise Levels Exceedance	Nil	Nil	Nil	Nil	Nil

NB: Receipt of validated noise and dust deposition data is generally one month behind.

Vessel Performance

Number of Vessels

Vessel Mix

	Units	July	August	September	YTD
Handy	Ships	1	1	0	2
Panamax	Ships	4	6	10	20
Japmax	Ships	27	51	35	113
Cape	Ships	15	22	14	51

Average Parcels Per Vessel

Handy	parcels/vessel	1.0	1.0	0.0	1.0
Panamax	parcels/vessel	1.5	1.3	1.3	1.4
Japmax	parcels/vessel	1.2	1.1	1.3	1.2
Cape	parcels/vessel	2.0	2.0	2.1	2.0

Vessel Mix

Handy	%	0.7%	0.3%	0.0%	0.3%
Panamax	%	6.3%	5.2%	12.5%	7.9%
Japmax	%	45.6%	55.3%	49.7%	50.9%
Cape	%	47.4%	39.2%	37.8%	40.9%

Total Tonnes

t	4,562,119	6,967,789	5,621,887	17,151,795
---	-----------	-----------	-----------	------------

Vessel Queuing

Average Daily Total Vessels in Queue	Vessels	36.8	36.5	21.4	31.6
Average Daily Vessels with Unavailable Cargo	Vessels	3.4	4.1	2.0	3.7
Average Days at Anchor	days	22.9	16.1	14.1	17.2
Average Days at Anchor after Coal is Available	days	20.1	13.9	12.8	15.1

*** Unavailable Cargo: Any vessel in the queue that does not have all parcels/products available at the mine/s.*

*** Weightometer tonnes are used in this report and cut-offs are last wagon and last coal for inloading and outloading respectively*

Operating Efficiency Outloading

