

# Performance Indicators

## Operational Performance

### System Delivery

No of Trains Delivered to the Terminal

	Units	October	November	December	YTD
Actual	trains	522	557	580	3485
Scheduled	trains	658	697	757	4325

No of Tonnes to be Delivered to the Terminal

Actual	tonnes	5,022,870	5,369,668	5,438,485	33,445,279
Scheduled	tonnes	6,645,800	7,039,700	7,645,700	43,682,500

### Inloading Performance

Average Terminal Unload Time

hrs:min	2:13	2:14	2:10	2:13
hrs:min	1:48	1:53	1:46	1:49

Average Train Unload Time

### Yard Performance

Average Build Time / Parcel

days	4.3	5.3	5.6	5.4
days	3.2	3.8	3.2	2.8

Average Residence Time / Parcel

### Outloading 1 Performance - L5

Utilisation

%	45.5%	59.0%	48.0%	24.6%
tph	4627	6063	4696	4418

Average Outloading Rate

### Outloading 2 Performance - L6

Utilisation

%	59.8%	60.9%	52.6%	28.8%
tph	4963	7040	5146	5015

Average Outloading Rate

### Outloading 3 Performance - L15

Utilisation

%	69.4%	79.2%	73.1%	37.9%
tph	5396	8039	5234	5382

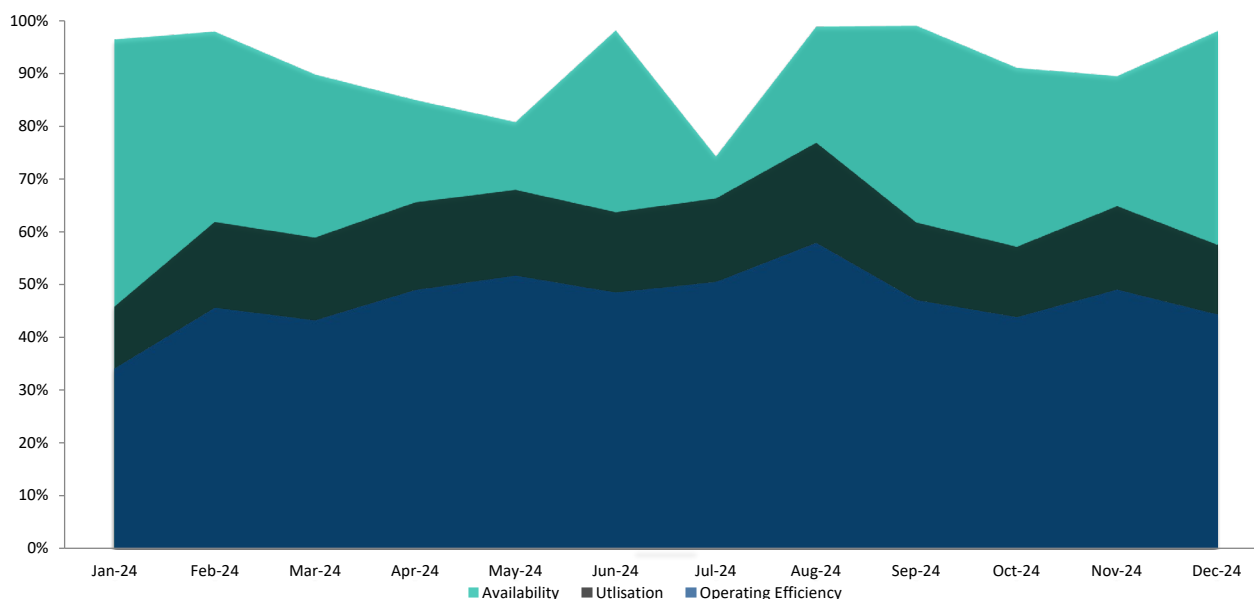
Average Outloading Rate

*\*\*Utilisation is a measurement of an entire system string. e.g. Outloading 1 to Shiploader 1.*

### Average Outloading Gross Rates

Handy	tph	3553	3804	0	3669
Panamax	tph	4933	4176	4088	4390
Japmax	tph	5032	4919	5074	4966
Cape	tph	5199	5202	5124	5284

### Operating Efficiency Inloading



# Performance Indicators

## Operational Performance

### Environmental Licence Performance

	Per Qtr	September	October	November	YTD
Dust Deposition Exceedance	Nil	Nil	Nil	Nil	Nil
Total Suspended Particulates Exceedance	Nil	Nil	Nil	Nil	Nil
Noise Levels Exceedance	Nil	Nil	Nil	Nil	Nil

*NB: Receipt of validated noise and dust deposition data is generally one month behind.*

### Vessel Performance

#### Number of Vessels

#### Vessel Mix

	Units	October	November	December	YTD
Handy	Ships	2	3	0	7
Panamax	Ships	5	5	4	34
Japmax	Ships	34	30	36	213
Cape	Ships	20	16	19	106

### Average Parcels Per Vessel

Handy	parcels/vessel	1.5	1.0	0.0	1.1
Panamax	parcels/vessel	1.6	1.2	1.3	1.4
Japmax	parcels/vessel	1.1	1.2	1.1	1.2
Cape	parcels/vessel	2.1	2.0	2.1	2.1

### Vessel Mix

Handy	%	1.8%	3.2%	0.0%	0.9%
Panamax	%	6.2%	6.9%	3.0%	6.6%
Japmax	%	42.7%	46.5%	51.5%	49.0%
Cape	%	49.3%	43.4%	45.5%	43.5%

### Total Tonnes

t	5,751,206	4,886,657	5,570,821	33,360,479
---	-----------	-----------	-----------	------------

### Vessel Queuing

Average Daily Total Vessels in Queue	Vessels	13.0	24.8	20.7	25.5
Average Daily Vessels with Unavailable Cargo	Vessels	5.0	6.4	8.5	3.7
Average Days at Anchor	days	7.0	12.5	10.9	13.7
Average Days at Anchor after Coal is Available	days	5.0	8.7	7.6	11.2

*\*\* Unavailable Cargo: Any vessel in the queue that does not have all parcels/products available at the mine/s.*

*\*\*Weightometer tonnes are used in this report and cut-offs are last wagon and last coal for inloading and outloading respectively*

### Operating Efficiency Outloading

